

IMMO Universal Decoding



IMMO Universal Decoding is the best software to remove the IMMO code of ECU. The software **IMMO Universal Decoding** is compatible with read file with programmer such as UPA-USB, WELLON Series VP/GP, Galep, Serial and many other (not supplied with the software). Once loaded the read file of the ECU, The software will repair the IMMO code. For many ECU, there is the possibility to make virgin the IMMO in order to recode, according to the value of original key, or to delete definitively (not recode).

The software included:

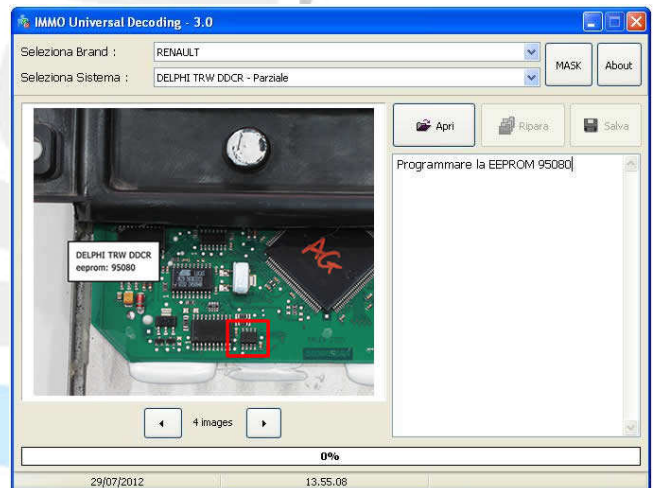
- 61 Brand
- 888** Compatible system for above **10000** model of cars
- * Box of information
- 1100 Photos**
- 680 MASK of identification

NEWS

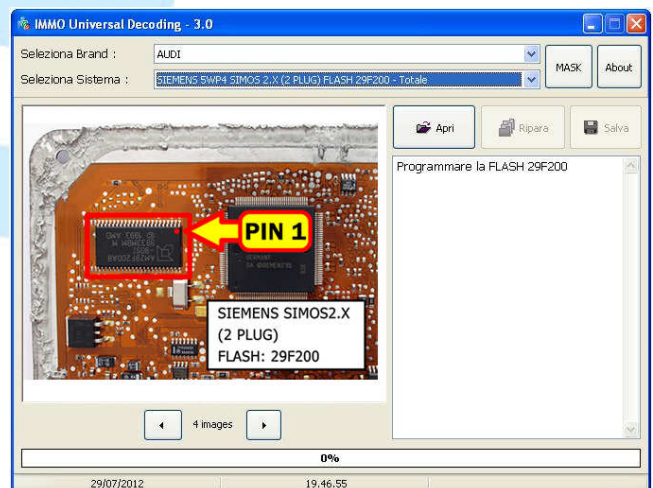
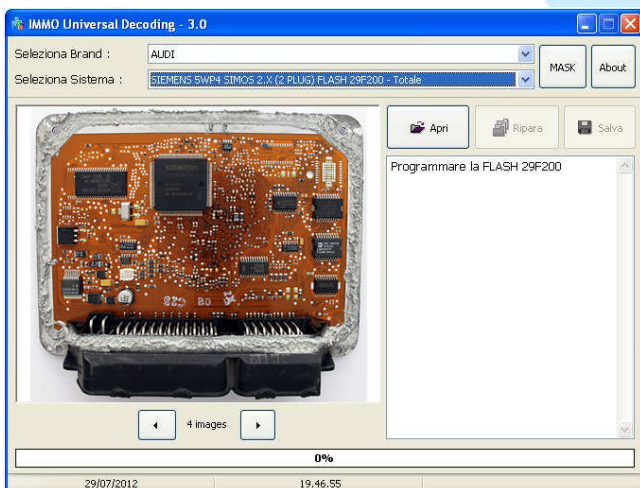
In this release we have introduced new **1100 Photos** ECU, the position of memories, plans, pinout, and much more. (Here are reported some examples that show the location of the memory and the high quality of the photos). It has also been added to auto-verification of EPROM and **“ALL Version Auto Check”** to identify the version of the ECU.

Fixed several minor errors and bugs from previous versions.

Exampler Photo Archive

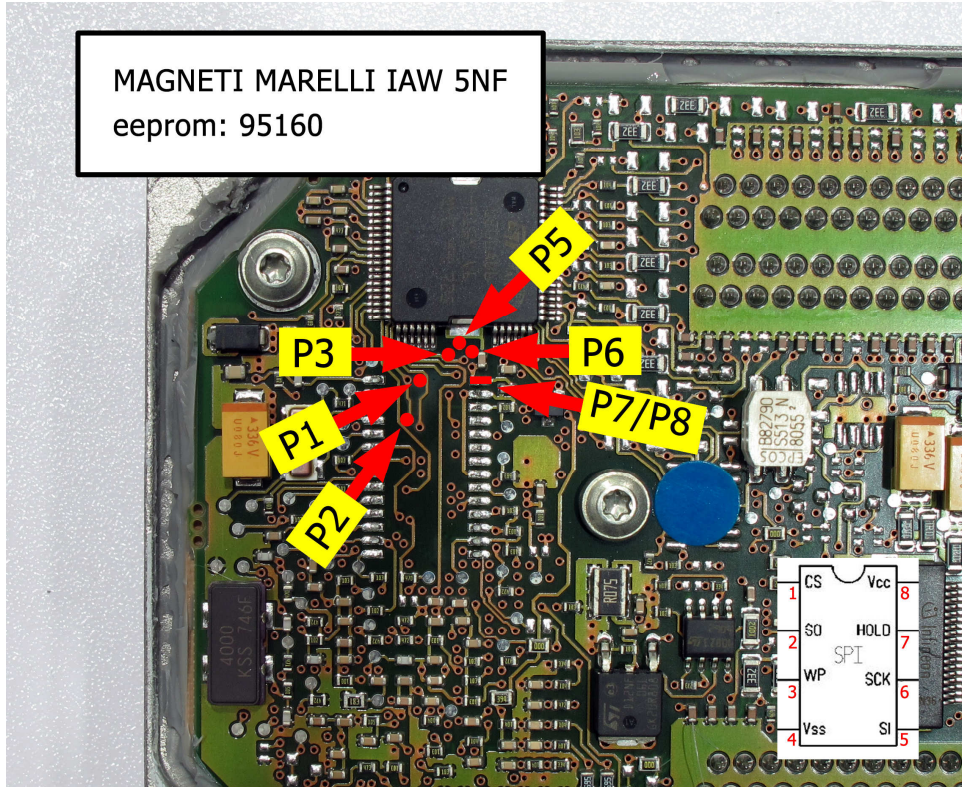


Exampler Photo Archive



Exampler Photo Archive

zoom

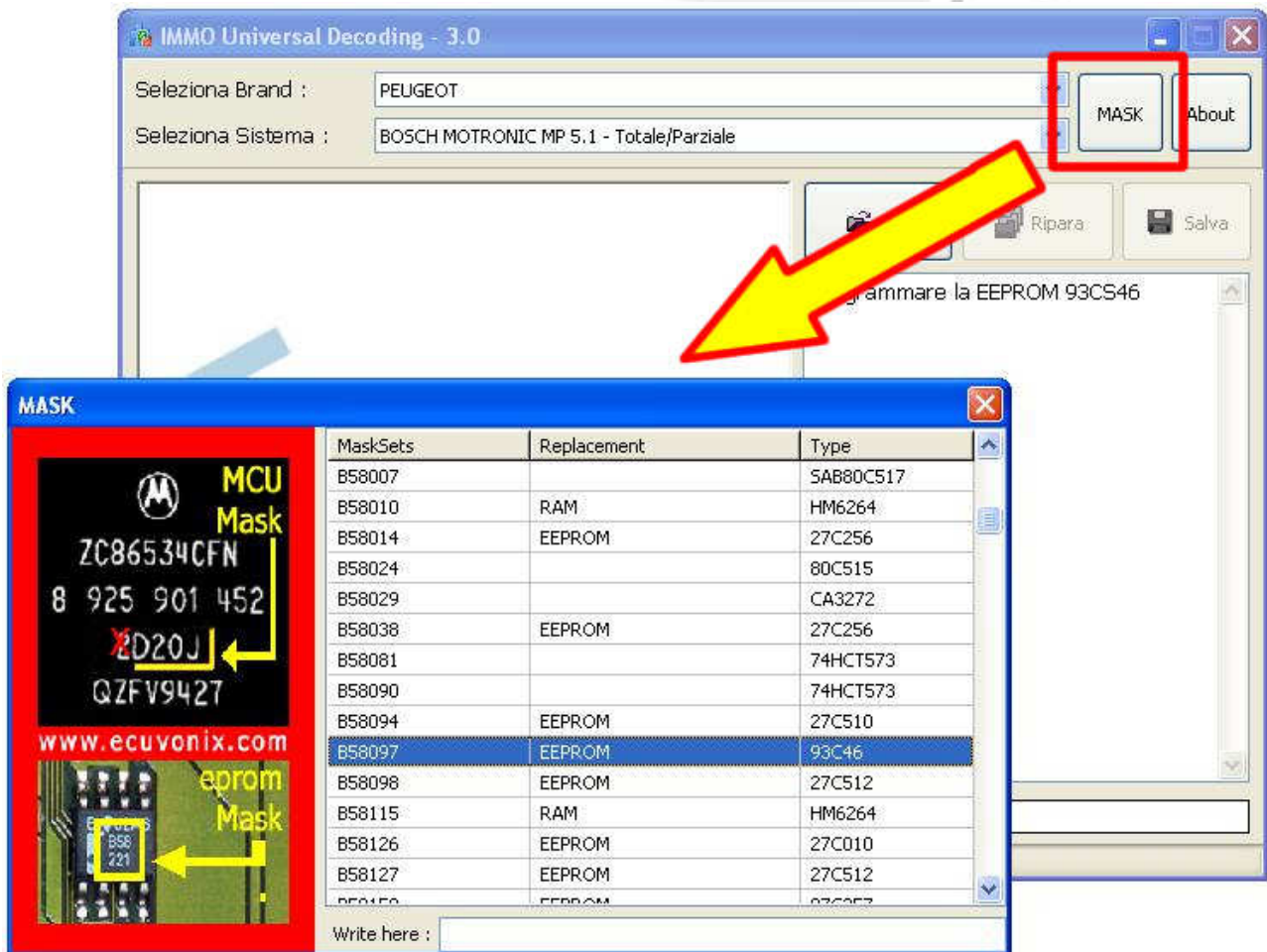


Exampler Photo Archive

zoom



* **IMMO Universal Decoding** has a information box that help the operator to identify the memory to read; also, the button Mask identify a memory catalogued in accordance to standard Bosch and Motorola.



The screenshot shows the 'IMMO Universal Decoding - 3.0' application window. The 'Seleziona Brand' field is set to 'PEUGEOT' and 'Seleziona Sistema' is 'BOSCH MOTRONIC MP 5.1 - Totale/Parziale'. The 'MASK' button is highlighted with a red box. A yellow arrow points from this button to a 'MASK' dialog box. The dialog box contains a table of memory sets and a Motorola MCU mask image.

MaskSets	Replacement	Type
B58007		5AB80C517
B58010	RAM	HM6264
B58014	EEPROM	27C256
B58024		80C515
B58029		CA3272
B58038	EEPROM	27C256
B58081		74HCT573
B58090		74HCT573
B58094	EEPROM	27C510
B58097	EEPROM	93C46
B58098	EEPROM	27C512
B58115	RAM	HM6264
B58126	EEPROM	27C010
B58127	EEPROM	27C512
B58150	EEPROM	27C010

The 'MASK' dialog box also features a Motorola MCU Mask image with the following text:

MCU Mask

ZC86534CFN

8 925 901 452

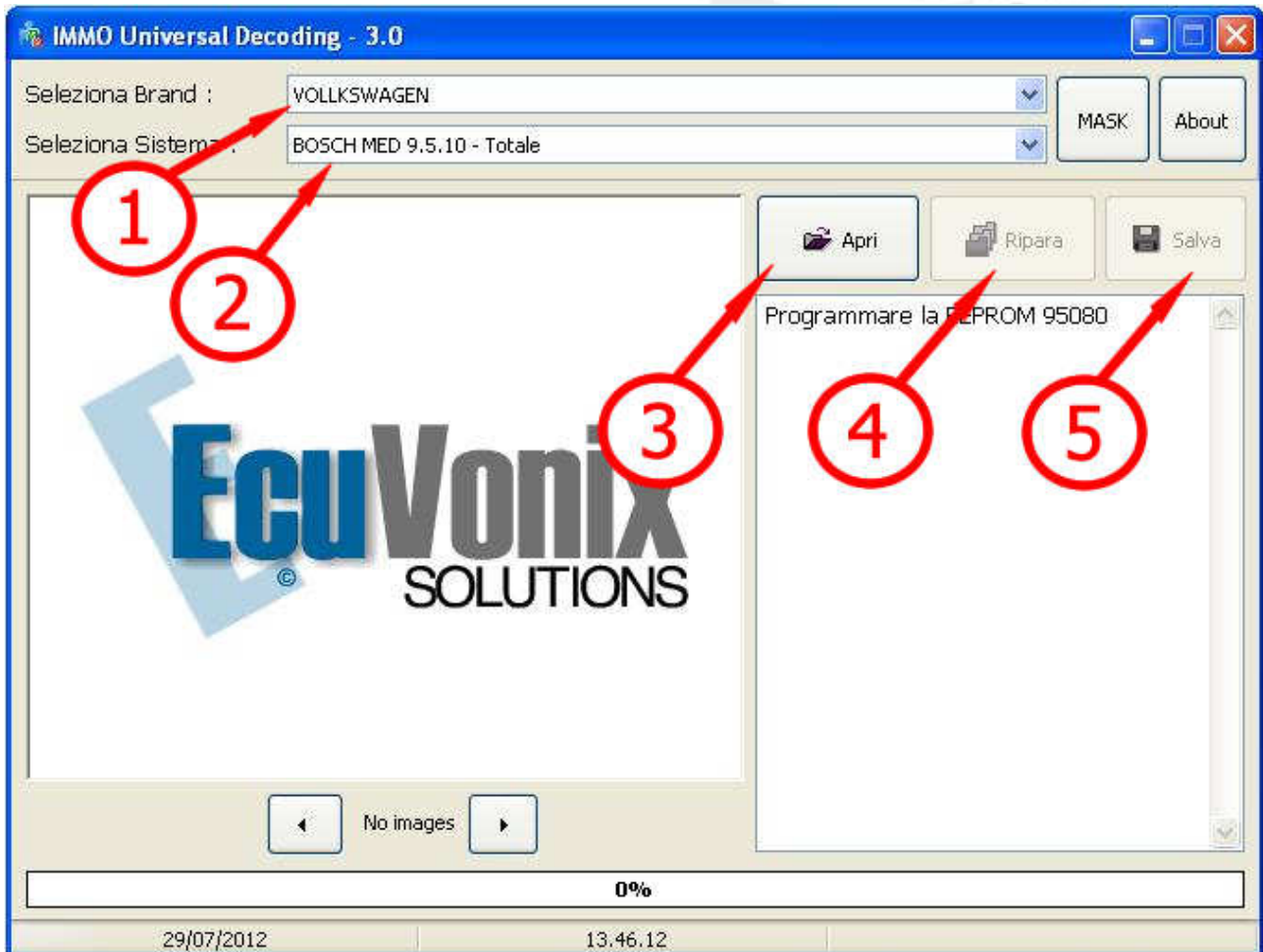
D20J

QZFV9427

www.ecuvonix.com

eprom Mask

Exemple of repair



1. Choose the Brand
2. Choose the System
3. Open the read file with your programmer
4. Process the file to execute the repair
5. Save the repai file

At this point reprogramming the ECU with the save file

DISCLAIMER: this software is supplied only such as test and for not moving cars. We will not be responsible for any direct and indirect damages from the use of the file created by the software.

IMMO Universal Decoding 3.2

ALFA ROMEO

BOSCH EDC15C5 (5 PLUG) - Virgin
BOSCH EDC15C6 - Virgin
BOSCH EDC15C6 EURO 3 - IMMO OFF
BOSCH EDC15C7 - Virgin
BOSCH EDC15C7 EURO 3 - IMMO OFF
BOSCH EDC16C39 - IMMO OFF
BOSCH EDC16C39 - Only 120HP - IMMO OFF
BOSCH EDC16C39 - Version 1 - Virgin
BOSCH EDC16C39 - Version 2 - Virgin
BOSCH EDC16C8 - Virgin
BOSCH EDC16C9 - IMMO OFF
BOSCH EDC16C9 - Virgin
BOSCH M1.5.5 - IMMO OFF
BOSCH M2.10.3 - Virgin & IMMO OFF
BOSCH M2.10.4 - Virgin & IMMO OFF
BOSCH M2.7 - IMMO OFF
BOSCH ME 7.1.1 - Virgin
BOSCH ME 7.3.1 All Version - IMMO OFF
BOSCH ME 7.3H4 - IMMO OFF
BOSCH ME 7.3H4 - Version 1 - Virgin
BOSCH ME 7.3H4 - Version 2 - Virgin
BOSCH ME 7.3H4 - With body computer - IMMO OFF
BOSCH ME 7.9.10 - With 95160 - **Virgin File**
BOSCH MED 7.1.1 - Virgin
BOSCH MED 7.6.1 - Virgin
BOSCH MED 7.6.2 - Virgin
BOSCH MSA11 EDC1.3.1- Virgin & IMMO OFF
GM MULTEC (PLUG RED & WHITE) MCU - Virgin & IMMO OFF
GM MULTEC (PLUG RED & WHITE) SWAP EPROM - Virgin & IMMO OFF

GM MULTEC (PLUG RED & BROWN) MCU - Virgin & IMMO OFF
GM MULTEC (PLUG RED & BROWN) SWAP EPROM - Virgin & IMMO OFF
HITACI EEPROM 24C02 - Virgin & IMMO OFF
HITACI EEPROM 93C46 - Virgin & IMMO OFF
HITACI MFI 003BC2 - IMMO OFF
HITACI MFI 009 - IMMO OFF
MAGNETI MARELLI IAW 18F.XX MCU - Virgin & IMMO OFF
MAGNETI MARELLI IAW 18F.XX SWAP EPROM - Virgin & IMMO OFF
MAGNETI MARELLI IAW 4Q-J-W MCU - Virgin & IMMO OFF
MAGNETI MARELLI IAW 8F.XX - Virgin & IMMO OFF

APRILIA BIKE

MAGNETI MARELLI 59M Hybrid - IMMO OFF
MAGNETI MARELLI 59M Hybrid - Virgin
MAGNETI MARELLI 5AM Hybrid - IMMO OFF
MAGNETI MARELLI 5AM Hybrid - Virgin
MAGNETI MARELLI 5DM Hybrid - IMMO OFF
MAGNETI MARELLI 5DM Hybrid - Virgin

AUDI

BOSCH EDC15 (1 PLUG) With EPROM 24C02 - IMMO OFF
BOSCH EDC15 (2 PLUG) With EPROM 24C02 - IMMO OFF
BOSCH EDC15M-5.X - EEPROM 24C04 - IMMO OFF
BOSCH EDC15M-5.X - FLASH 29F400 - IMMO OFF
BOSCH EDC15P - EEPROM 24C04 - IMMO OFF
BOSCH EDC15P - FLASH 29F400 - IMMO OFF
BOSCH EDC15V - EEPROM 24C04 - IMMO OFF
BOSCH EDC15V - FLASH 29F400 - IMMO OFF
BOSCH EDC15V P40 EURO3 - FLASH 29F400 - IMMO OFF
BOSCH EDC15VM+ - EEPROM 24C04 - IMMO OFF
BOSCH EDC15VM+ - FLASH 29F400 - IMMO OFF
BOSCH EDC16CP34 - IMMO OFF
BOSCH EDC16U1 - IMMO OFF

BOSCH EDC16U31 - IMMO OFF
BOSCH EDC16U34 - IMMO OFF
BOSCH M2.3.2 - IMMO OFF
BOSCH M3.2.1 - IMMO OFF
BOSCH M3.8.X - Version 1 - IMMO OFF
BOSCH M3.8.X - Version 2 - IMMO OFF
BOSCH M5.4.1 - IMMO OFF
BOSCH M5.9.2 - IMMO OFF
BOSCH ME 7.X.X - **ALL Version Auto Check** - IMMO OFF
BOSCH MED 9.5.10 - IMMO OFF
BOSCH MSA 11 EDC1.3.1 - Virgin & IMMO OFF
BOSCH MSA 15.X - IMMO OFF
DIGIFANT 3.2 - IMMO OFF
SIEMENS 5WP4 SIMOS 1.X (1 PLUG) - IMMO OFF
SIEMENS 5WP4 SIMOS 2.X (2 PLUG) EPROM 27C010 - IMMO OFF
SIEMENS 5WP4 SIMOS 2.X (2 PLUG) FLASH 29F200 - IMMO OFF
SIEMENS 5WP4 SIMOS 3.X (2 PLUG) - **ALL Version Auto Check** - IMMO OFF
SIEMENS SIMOS 7.X - **ALL Version Auto Check** - IMMO OFF
SIEMENS SIMOS 8.1 - IMMO OFF
SIEMENS SIMOS 9.1 - IMMO OFF

BLAZER

BOSCH M2.8 - IMMO OFF

BMW

BOSCH EDC15C4 - Virgin
BOSCH EDC15M-6 DDE 3.0 - Virgin
BOSCH M 1.7.2 - IMMO OFF
BOSCH MSA 11 EDC1.3.1 - Virgin & IMMO OFF
BOSCH MSA 15.5 - IMMO OFF
SIEMENS BMS 46 - Virgin
SIEMENS MMS 50 - Virgin
SIEMENS MMS 52 - Virgin

SIEMENS MS 41.0 DME - IMMO OFF

SIEMENS MS 42 - Virgin

CHEVROLET

BOSCH M2.8 - IMMO OFF

GM MULTEC (PLUG RED & WHITE) - IMMO OFF

GM MULTEC (PLUG RED & WHITE) SWAP EPROM - Virgin & IMMO OFF

KEMSCO - MATIZ - Virgin

KOREA DELPHI Hybrid - AVEO 1400cc - IMMO OFF

CHRYSLER

BOSCH EDC MSA 15.5-5.3 - IMMO OFF

BOSCH EDC MSA 15.5-5.3 - Virgin

BOSCH EDC MSA 15.5-5.5 - IMMO OFF

BOSCH EDC MSA 15.5-5.5 - Virgin

BOSCH EDC15C2 - IMMO OFF

CHRYSLER - White BOX

SIEMENS SIRIUS 34 - Virgin

CITROEN

BOSCH EDC15 - PIN PROGRAMMER

BOSCH EDC15C2 (1 PLUG) - IMMO OFF

BOSCH EDC15C2 (3 PLUG) - Version 1 - IMMO OFF

BOSCH EDC15C2 (3 PLUG) - Version 2 - IMMO OFF

BOSCH EDC15C6 EURO 3 - IMMO OFF

BOSCH EDC15C6 EURO 3 - Virgin

BOSCH EDC15C7 - Virgin

BOSCH EDC15C7 EURO 3 - IMMO OFF

BOSCH EDC16C3 - Virgin

BOSCH EDC16C34 - IMMO OFF

BOSCH EDC16C34 - PIN PROGRAMMER

BOSCH EDC16C34 - **Virgin File**

BOSCH M7.4.4 EEPROM 95080 - IMMO OFF

BOSCH M7.4.4 EEPROM 95080 - Virgin
BOSCH MA 3.0 - Virgin & IMMO OFF
BOSCH MA 3.1 - Version 1 - Virgin & IMMO OFF
BOSCH MA 3.1 - Version 2 - IMMO OFF
BOSCH MA 3.2 - Virgin & IMMO OFF
BOSCH ME 7.4.4 - PIN PROGRAMMER
BOSCH ME 7.4.4 EEPROM 95160 - Version 1 - IMMO OFF
BOSCH ME 7.4.4 EEPROM 95160 - Version 2 - IMMO OFF
BOSCH ME 7.4.4 FLASH - IMMO OFF
BOSCH MOTRONIC MP 3.1 - Virgin & IMMO OFF
BOSCH MOTRONIC MP 3.2 - Virgin & IMMO OFF
BOSCH MOTRONIC MP 5.1 - Virgin & IMMO OFF
BOSCH MOTRONIC MP 5.1.1 - Virgin & IMMO OFF
BOSCH MOTRONIC MP 5.2 - Virgin & IMMO OFF
BOSCH MOTRONIC MP 7.0 - Virgin
BOSCH MOTRONIC MP 7.2 - Virgin & IMMO OFF
BOSCH MOTRONIC MP 7.3 - Virgin & IMMO OFF
BOSCH MSA 11 EDC1.3.8 - Virgin & IMMO OFF
BSI - C2 - PIN PROGRAMMER
BSI - C2 - Siemens Virgin
BSI - C3 - Siemens Virgin
BSI - C4 - Virgin
BSI - C5 - PIN PROGRAMMER
BSI - XARA Picasso Year 2002 - PIN PROGRAMMER
BSI - XARA Year 2003 - PIN PROGRAMMER
BSI Valeo - XARA Year 2002 - Virgin
BSI Valeo - XARA Year 2003 - Virgin
IMMOBOX Valeo - Citroen C1 1000cc - Virgin File
KEYPAD PSA - IMMO OFF
LUCAS EPIC - Virgin & IMMO OFF
MAGNETI MARELLI 1AF.13-14-15-16-17 - IMMO OFF
MAGNETI MARELLI 48P.10 - Virgin
MAGNETI MARELLI 48P.3X - Virgin & IMMO OFF

MAGNETI MARELLI 48P2.XX - ALL Version - Virgin
MAGNETI MARELLI 4MP.XX - ALL Version - Virgin
MAGNETI MARELLI 4MP2.XX - ALL Version - Virgin
MAGNETI MARELLI 5NP - Virgin
MAGNETI MARELLI G6 MCU - Virgin & IMMO OFF
MAGNETI MARELLI G6 SWAP EPROM - Virgin & IMMO OFF
MAGNETI MARELLI IAW 1AP. XX - ALL VERSION - SWAP EPROM - Virgin & IMMO OFF
MAGNETI MARELLI IAW 1AP.20 - Virgin & IMMO OFF
MAGNETI MARELLI IAW 1AP.40 - Virgin & IMMO OFF
MAGNETI MARELLI IAW 1AP.41 - Virgin & IMMO OFF
MAGNETI MARELLI IAW 1AP.43 - Virgin & IMMO OFF
MAGNETI MARELLI IAW 1AP.80 - Virgin & IMMO OFF
MAGNETI MARELLI IAW 1AP.81 - Virgin & IMMO OFF
MAGNETI MARELLI IAW 1AP.83 - Virgin & IMMO OFF
MAGNETI MARELLI IAW 1AP.90 - Virgin & IMMO OFF
MAGNETI MARELLI IAW 6LPX.XX - **ALL Version Auto Check** - Virgin
MAGNETI MARELLI IAW 8P.XX MCU - Virgin & IMMO OFF
MAGNETI MARELLI IAW 8P.XX SWAP EPROM - Virgin & IMMO OFF
SAGEM S2000 - Virgin
SAGEM S2000 ECU - PIN PROGRAMM
SAGEM SL96 TMS374 1x28F512 - Virgin & IMMO OFF
SAGEM SL96 TMS374 2x28F512 - Virgin & IMMO OFF
SIEMENS SID 801 - Version 1 - Virgin & IMMO OFF
SIEMENS SID 801 - Version 2 - Virgin
SIEMENS SID 801A - Version 1 - Virgin & IMMO OFF
SIEMENS SID 801A - Version 2 - Virgin
SIEMENS SID 802 - Virgin
SIEMENS SID 803 - PIN PROGRAMM
SIEMENS SID 804 - Virgin
SIEMENS SID 806 - Virgin
VISTEON DCU 102 - Virgin

DACIA

DACIA MEPS CKS - Virgin & IMMO OFF
DELPHI DCM 1.2 - IMMO OFF
DELPHI DCM 1.2 - Virgin
DELPHI TRW - Virgin
DELPHI TRW DDCR - Virgin
SIEMENS EMS 3132 - Virgin
SIEMENS EMS 3132 - Without CAN - IMMO OFF
SIEMENS SIRIUS 32 - Virgin
SIEMENS SIRIUS 32 - Without CAN - IMMO OFF
SIEMENS SIRIUS 34 - IMMO OFF
SIEMENS SIRIUS 34 - Virgin

DAEWOO

DELPHI-DELCO Hybrid - IMMO OFF
GM MULTEC (PLUG BLU & GRAY) EPROM - Virgin & IMMO OFF
GM MULTEC (PLUG BLU & GRAY) MCU - Virgin & IMMO OFF
GM MULTEC (PLUG LIGHT BLUE) MCU - Virgin & IMMO OFF
GM MULTEC (PLUG LIGHT BLUE) SWAP EPROM - Virgin & IMMO OFF
GM MULTEC (PLUG RED & WHITE) MCU - Virgin & IMMO OFF
GM MULTEC (PLUG RED & WHITE) SWAP EPROM - Virgin & IMMO OFF
GM MULTEC (PLUG RED & BROWN) MCU - Virgin & IMMO OFF
GM MULTEC (PLUG RED & BROWN) SWAP EPROM - Virgin & IMMO OFF
KEMSCO D3 - Virgin
SIEMENS MCU TMS374 - Virgin & IMMO OFF

DAF

BOSCH EDC7 - IMMO OFF
BOSCH EDC7 - Virgin
BOSCH MS 6.2 - Virgin & IMMO OFF

DODGE

BOSCH EDC MSA 15.5-5.3 - IMMO OFF

BOSCH EDC MSA 15.5-5.3 - Virgin

BOSCH EDC MSA 15.5-5.5 - IMMO OFF

BOSCH EDC MSA 15.5-5.5 - Virgin

DUCATI BIKE

MAGNETI MARELLI 59M Hybrid - IMMO OFF

MAGNETI MARELLI 59M Hybrid - Virgin

MAGNETI MARELLI 5AM Hybrid - IMMO OFF

MAGNETI MARELLI 5AM Hybrid - Virgin

FENDT TRACTOR

BOSCH MS 6.4 - Virgin & IMMO OFF

FERRARI

BOSCH ME 7.3H4 - BETA TEST - Virgin

FIAT

BOSCH EDC15C2 - IMMO OFF

BOSCH EDC15C5 (5 PLUG) - Virgin

BOSCH EDC15C6 - Virgin

BOSCH EDC15C6 EURO 3 - IMMO OFF

BOSCH EDC15C7 - Virgin

BOSCH EDC15C7 EURO 3 - IMMO OFF

BOSCH EDC15C8 - Virgin

BOSCH EDC16C39 - IMMO OFF

BOSCH EDC16C39 - Only 120HP - IMMO OFF

BOSCH EDC16C39 - Version 1 - Virgin

BOSCH EDC16C39 - Version 2 - Virgin

BOSCH EDC16C8 - Virgin

BOSCH EDC16C9 - IMMO OFF

BOSCH EDC16C9 - Virgin

BOSCH EDC16CP39 - Virgin File

BOSCH M1.5.5 - IMMO OFF

BOSCH M1.7 - IMMO OFF

BOSCH M2.10.3 - Virgin & IMMO OFF

BOSCH M2.10.4 - Virgin & IMMO OFF

BOSCH M2.7 - IMMO OFF

BOSCH M3.8.2 - Virgin & IMMO OFF

BOSCH ME 3.1 - Virgin

BOSCH ME 7.3H4 - IMMO OFF

BOSCH ME 7.3H4 - Version 1 - Virgin

BOSCH ME 7.3H4 - Version 2 - Virgin

BOSCH ME 7.3H4 - With body computer - IMMO OFF

BOSCH ME 7.9.10 - With 95080 - Virgin

BOSCH ME 7.9.10 - With 95160 - **Virgin File**

BOSCH ME 7.9.6 - Virgin

BOSCH MOTRONIC MA 1.7.3 - Virgin & IMMO OFF

BOSCH MOTRONIC MP 3.2 - Virgin & IMMO OFF

BOSCH MSA 11 EDC1.3.1- Virgin & IMMO OFF

GM MULTEC (PLUG RED & WHITE) MCU - Virgin & IMMO OFF

GM MULTEC (PLUG RED & WHITE) SWAP EPROM - Virgin & IMMO OFF

GM MULTEC (PLUG RED & BROWN) MCU - Virgin & IMMO OFF

GM MULTEC (PLUG RED & BROWN) SWAP EPROM - Virgin & IMMO OFF

HITACHI EEPROM 24C02 - Virgin & IMMO OFF

HITACHI EEPROM 93C46 - Virgin & IMMO OFF

HITACHI MFI 003BC2 - IMMO OFF

HITACHI MFI 009 - IMMO OFF

LUCAS DCU3F - IMMO OFF

LUCAS DCU3F - Virgin

LUCAS EPIC MCU - Virgin & IMMO OFF

MAGNETI MARELLI 1AB.XX - IMMO OFF

MAGNETI MARELLI 1AF.13-14-15-16-17 - IMMO OFF

MAGNETI MARELLI 1AG7.XX MCU - Virgin & IMMO OFF

MAGNETI MARELLI 48P - Virgin

MAGNETI MARELLI 48P.3X - Virgin & IMMO OFF

MAGNETI MARELLI 49F - Virgin

MAGNETI MARELLI 49F Ver: 1 - IMMO OFF
MAGNETI MARELLI 49F Ver: 2 - IMMO OFF
MAGNETI MARELLI 4AF - IMMO OFF
MAGNETI MARELLI 4AF - Virgin
MAGNETI MARELLI 4EF - IMMO OFF
MAGNETI MARELLI 4EF - Virgin
MAGNETI MARELLI 4GF - IMMO OFF
MAGNETI MARELLI 4GF - Virgin
MAGNETI MARELLI 4MP - Virgin & IMMO OFF
MAGNETI MARELLI 4SF - Virgin
MAGNETI MARELLI 59F Hybrid HW > Ver. 100 - IMMO OFF
MAGNETI MARELLI 59F Hybrid HW > Ver. 100 - Virgin
MAGNETI MARELLI 59FBTX - Virgin
MAGNETI MARELLI 5AF Hybrid - IMMO OFF
MAGNETI MARELLI 5AF Hybrid - Virgin
MAGNETI MARELLI 5NF - IMMO OFF
MAGNETI MARELLI 5NF - Virgin
MAGNETI MARELLI 5SF - Virgin
MAGNETI MARELLI 5SF3 All Version - Virgin
MAGNETI MARELLI 5SF8 All Version - Virgin
MAGNETI MARELLI 5SF8 and 5SF9 - **Virgin File Collection**
MAGNETI MARELLI 5SF9 All Version - Virgin
MAGNETI MARELLI IAW 16F.XX MCU - Virgin & IMMO OFF
MAGNETI MARELLI IAW 16F.XX SWAP EPROM - Virgin & IMMO OFF
MAGNETI MARELLI IAW 18F.XX MCU - Virgin & IMMO OFF
MAGNETI MARELLI IAW 18F.XX SWAP EPROM - Virgin & IMMO OFF
MAGNETI MARELLI IAW 1ABB.92 - Virgin & IMMO OFF
MAGNETI MARELLI IAW 1AF.1G - Virgin & IMMO OFF
MAGNETI MARELLI IAW 4Q-J-W MCU - Virgin & IMMO OFF
MAGNETI MARELLI IAW 8F.XX MCU - Virgin & IMMO OFF
MAGNETI MARELLI IAW 8P.XX MCU - Virgin & IMMO OFF
MAGNETI MARELLI IAW 8P.XX SWAP EPROM - Virgin & IMMO OFF
MAGNETI MARELLI MJD 6F3 - Version Eprom - IMMO OFF

MAGNETI MARELLI MJD 6F3 - Version Flash - IMMO OFF

MAGNETI MARELLI MJD 6F3 - Virgin

MAGNETI MARELLI MJD 6J3 - Version Eprom - IMMO OFF

MAGNETI MARELLI MJD 6J3 - Version Flash - IMMO OFF

MAGNETI MARELLI MJD 6J3 - Virgin

MAGNETI MARELLI MJD 8DF & 8F2 - **Virgin File**

VISTEON DCU 102 - Virgin

FORD

BOSCH EDC15P - EEPROM 24C04 - IMMO OFF

BOSCH EDC15V - EEPROM 24C04 - IMMO OFF

BOSCH EDC16C3 - Virgin

BOSCH M3.8.1 - IMMO OFF

BOSCH ME 7.1 - IMMO OFF

BOSCH MSA 15.X - IMMO OFF

FORD EEC-IV with TMS (old version) - **MOD - IMMO OFF**

FORD EEC-V with TMS (old version) - **MOD - IMMO OFF**

SIEMENS SID 804 - Virgin

HONDA

BOSCH EDC15C7 - Virgin

BOSCH EDC16C31 - Virgin

BOSCH MSA 11 EDC1.3.1- Virgin & IMMO OFF

HITACHI P9L - Virgin & IMMO OFF

HYUNDAI

BOSCH EDC15C7 - Virgin

KEFICO with EEPROM 95160 - Virgin

KEFICO with FLASH 29F400 - IMMO OFF

KEFICO X170 - IMMO OFF

SIEMENS S-11 - 1000cc - DOHC - IMMO OFF

SIEMENS S-11 - 1100cc - DOHC - IMMO OFF

ZEXEL - IMMO OFF

ISUZU

BOSCH EDC15M - Virgin

IVECO

BOSCH EDC15C7 - IMMO OFF

BOSCH EDC15C7 - Virgin

BOSCH EDC15C8 1.31 - Virgin

BOSCH EDC16C39 - Version 1 - Virgin

BOSCH EDC16C39 - Version 2 - Virgin

BOSCH EDC16C39 FLASH - IMMO OFF

BOSCH EDC16C8 - IMMO OFF

BOSCH EDC7 - IMMO OFF

BOSCH EDC7 - Virgin

BOSCH MS 6.2 - Virgin & IMMO OFF

BOSCH MS 6.3 - Virgin & IMMO OFF

MAGNETI MARELLI IAW 1AF.1L - IMMO OFF

JAGUAR

DENSO Old Version - IMMO OFF

JEEP

BOSCH EDC MSA 15.5 - 5.3 - IMMO OFF

BOSCH EDC MSA 15.5 - 5.3 - Virgin

BOSCH EDC MSA 15.5 - 5.5 - IMMO OFF

BOSCH EDC MSA 15.5 - 5.5 - Virgin

BOSCH EDC15C2 - IMMO OFF

KAWASAKI

DENSO - With EEPROM 93C66 - Virgin

KIA

BOSCH EDC15C7 - Virgin
KIA MOST K9AB EU - IMMO OFF
KIA MOST K9BA - IMMO OFF
KIA MOST K9BC - IMMO OFF
SIEMENS K348 1300cc - IMMO OFF
SIEMENS KC11C 1300cc - IMMO OFF
SIEMENS MCU TMS374 - Virgin & IMMO OFF
SIEMENS S-II 1500cc - DOHC - IMMO OFF
ZEXEL - IMMO OFF
ZEXEL K04R - OKI M951G - Virgin
ZEXEL K04R - OKI M951G - IMMO OFF

LADA

BOSCH M 7.9.7 - Virgin
BOSCH M1.5.4 - IMMO OFF
BOSCH MP 7.0 - IMMO OFF
BOSCH MP 7.3 - IMMO OFF
IMMOBOX for BOSCH MP 7.0 & 7.3
LADA TMS374 - Virgin & IMMO OFF

LANCIA

BOSCH EDC15C2 - IMMO OFF
BOSCH EDC15C5 (5 PLUG) - Virgin
BOSCH EDC15C6 - Virgin
BOSCH EDC15C6 EURO 3 - IMMO OFF
BOSCH EDC15C7 - IMMO OFF
BOSCH EDC15C7 - Virgin
BOSCH EDC16C39 - IMMO OFF
BOSCH EDC16C39 - Version 1 - Virgin
BOSCH EDC16C39 - Version 2 - Virgin
BOSCH EDC16C8 - Virgin
BOSCH EDC16C9 - IMMO OFF
BOSCH EDC16C9 - Virgin

BOSCH M1.5.5 - IMMO OFF

BOSCH M2.10.3 - Virgin & IMMO OFF

BOSCH M2.10.4 - Virgin & IMMO OFF

BOSCH M2.7 - IMMO OFF

BOSCH ME 7.3H4 - IMMO OFF

BOSCH ME 7.3H4 - Version 1 - Virgin

BOSCH ME 7.3H4 - Version 2 - Virgin

BOSCH ME 7.3H4 - With body computer - IMMO OFF

BOSCH ME 7.9.10 - With 95080 - Virgin

BOSCH MOTRONIC MA 1.7.3 - Virgin & IMMO OFF

BOSCH MP3.2 - Virgin & IMMO OFF

BOSCH MSA 11 EDC1.3.1- Virgin & IMMO OFF

GM MULTEC (PLUG RED & WHITE) MCU - Virgin & IMMO OFF

GM MULTEC (PLUG RED & WHITE) SWAP EPROM - Virgin & IMMO OFF

GM MULTEC (PLUG RED & BROWN) MCU - Virgin & IMMO OFF

GM MULTEC (PLUG RED & BROWN) SWAP EPROM - Virgin & IMMO OFF

HITACHI EEPROM 24C02 - Virgin & IMMO OFF

HITACHI EEPROM 93C46 - Virgin & IMMO OFF

HITACHI MFI 003BC2 - IMMO OFF

HITACHI MFI 009 - IMMO OFF

LUCAS EPIC MCU - Virgin & IMMO OFF

MAGNETI MARELLI 1AB.XX - IMMO OFF

MAGNETI MARELLI 1AF.13-14-15-16-17 - IMMO OFF

MAGNETI MARELLI 48P - Virgin

MAGNETI MARELLI 48P.3X - Virgin & IMMO OFF

MAGNETI MARELLI 49F - Virgin

MAGNETI MARELLI 49F Ver: 1 - IMMO OFF

MAGNETI MARELLI 49F Ver: 2 - IMMO OFF

MAGNETI MARELLI 4AF - IMMO OFF

MAGNETI MARELLI 4AF - Virgin

MAGNETI MARELLI 4EF - IMMO OFF

MAGNETI MARELLI 4EF - Virgin

MAGNETI MARELLI 4GF - IMMO OFF

MAGNETI MARELLI 4GF - Virgin
MAGNETI MARELLI 4MP - Virgin & IMMO OFF
MAGNETI MARELLI 4SF - Virgin
MAGNETI MARELLI 59F Hybrid HW > Ver. 100 - IMMO OFF
MAGNETI MARELLI 59F Hybrid HW > Ver. 100 - Virgin
MAGNETI MARELLI 5AF Hybrid - IMMO OFF
MAGNETI MARELLI 5AF Hybrid - Virgin
MAGNETI MARELLI 5NF - IMMO OFF
MAGNETI MARELLI 5NF - Virgin
MAGNETI MARELLI 5SF - Virgin
MAGNETI MARELLI IAW 16F.XX MCU - Virgin & IMMO OFF
MAGNETI MARELLI IAW 16F.XX SWAP EPROM - Virgin & IMMO OFF
MAGNETI MARELLI IAW 18F.XX MCU - Virgin
MAGNETI MARELLI IAW 18F.XX SWAP EPROM - Virgin & IMMO OFF
MAGNETI MARELLI IAW 1ABB.92 - Virgin & IMMO OFF
MAGNETI MARELLI IAW 1AF.1G - Virgin & IMMO OFF
MAGNETI MARELLI IAW 4Q-J-W MCU - Virgin & IMMO OFF
MAGNETI MARELLI IAW 4Q5 - IMMO OFF
MAGNETI MARELLI IAW 8F.XX MCU - Virgin & IMMO OFF
MAGNETI MARELLI IAW 8P.XX MCU - Virgin & IMMO OFF
MAGNETI MARELLI IAW 8P.XX SWAP EPROM - Virgin & IMMO OFF
MAGNETI MARELLI MJD 6F3 - Version Eprom - IMMO OFF
MAGNETI MARELLI MJD 6F3 - Version Flash - IMMO OFF
MAGNETI MARELLI MJD 6F3 - Virgin
MAGNETI MARELLI MJD 6J3 - Version Eprom - IMMO OFF
MAGNETI MARELLI MJD 6J3 - Version Flash - IMMO OFF
MAGNETI MARELLI MJD 6J3 - Virgin
MAGNETI MARELLI MJD 8DF & 8F2 - **Virgin File**

LAND ROVER

BOSCH EDC15C4 - Virgin
BOSCH EDC15M - Virgin
BOSCH MSA 11 EDC1.3.1- Virgin & IMMO OFF

BOSCH MSA 15.5 - IMMO OFF

MEMS MKC - IMMO OFF

MSB 1011XX (PLUG ROSSO & NERO) 93C46 - IMMO OFF

MSB 1011XX (PLUG ROSSO & NERO) 93C66 - IMMO OFF

SIEMENS SID 901 - Virgin

LEXUS

DENSO - Virgin

MAN

BOSCH EDC7 - IMMO OFF

BOSCH EDC7 - Virgin

BOSCH MS 6.1 - Virgin & IMMO OFF

MAZDA

BOSCH EDC16C3 - Virgin

DENSO - Virgin

SIEMENS SID 802 - Virgin

SIEMENS SID 804 - Virgin

MERCEDES

BOSCH EDC15.5 - Virgin

BOSCH EDC15C0 - Virgin

BOSCH EDC15C6 - Version 1 - Virgin

BOSCH EDC15C6 - Version 2 - Virgin

BOSCH EDC16 - Version 1 - Virgin

BOSCH EDC16 - Version 2 - Virgin

BOSCH EDC16C2 - Virgin

BOSCH ME 2.0 - Virgin

BOSCH ME 2.1 - Virgin

DEFAULT DAS - EDC15 CR1 Diesel

DEFAULT DAS - EDC15 CR2 Diesel

DEFAULT DAS - EDC16CP3 Diesel

DEFAULT DAS - HFM-VDO 24C04

DEFAULT DAS - ME 2.0

DEFAULT DAS - TEMIC Diesel - Auto Sync

IMMOBOX Siemens - Repair Start Error! Class-A 1.7 CDI - MCU HC05

IMMOBOX TEMIC - Repair Start Error! Sprinter MCU HC08

IMMOBOX TEMIC - Repair Start Error! Vito MCU HC05

IMMOBOX TEMIC - Repair Start Error! Vito MCU HC08

LUCAS MCU HC11E9 - Virgin

LUSAS - IMMO OFF

SIEMENS VDO REPAIR MSE H10 - Version 1

SIEMENS VDO REPAIR MSE H10 - Version 2

SIEMENS VDO REPAIR MSM 1.X - Version 1

SIEMENS VDO REPAIR MSM 1.X - Version 2

MERCEDES TRUCKS

TEMIC - Virgin

MG

BOSCH EDC15C4 - Virgin

BOSCH MSA 11 EDC1.3.1 - Virgin & IMMO OFF

MEMS 3 - IMMO OFF

MEMS MKC - IMMO OFF

MINI

BOSCH EDC15C4 - Virgin

SIEMENS EMS 2 - IMMO OFF

SIEMENS EMS 2 - Virgin

MITSUBISHI

BOSCH EDC15C3 - Virgin

BOSCH EDC16+ - Virgin

MOTO GUZZI

MAGNETI MARELLI 59M Hybrid - IMMO OFF

MAGNETI MARELLI 59M Hybrid - Virgin

MAGNETI MARELLI 5AM Hybrid - IMMO OFF

MAGNETI MARELLI 5AM Hybrid - Virgin

MOTO MORINI

MAGNETI MARELLI 59M Hybrid - IMMO OFF

MAGNETI MARELLI 59M Hybrid - Virgin

MAGNETI MARELLI 5AM Hybrid - IMMO OFF

MAGNETI MARELLI 5AM Hybrid - Virgin

MV AUGUSTA

MAGNETI MARELLI 59M Hybrid - IMMO OFF

MAGNETI MARELLI 59M Hybrid - Virgin

MAGNETI MARELLI 5AM Hybrid - IMMO OFF

MAGNETI MARELLI 5AM Hybrid - Virgin

NEW HOLLAND

BOSCH EDC7 - IMMO OFF

BOSCH EDC7 - Virgin

NISSAN

BOSCH EDC15C3 - Virgin

BOSCH EDC15C7 (Block of the counter) - MOD - Virgin

BOSCH EDC16C3 - Virgin

BOSCH EDC16C36 - Virgin File

BOSCH M1.9.5 - Virgin & IMMO OFF

BOSCH MSA 15.5-6 - IMMO OFF

BOSCH MSA 15.5-6 - Virgin

DELPHI DCM 1.2 - IMMO OFF

DELPHI DCM 1.2 - Virgin

DELPHI TRW - Virgin

DELPHI TRW DDCR - Virgin

LUCAS - IMMO OFF

SIEMENS EMS 3132 - Virgin

SIEMENS EMS 3132 - Without CAN - IMMO OFF

NISSAN TRUCKS

BOSCH MS 6.4 - Virgin & IMMO OFF

OPEL

BOSCH EDC15C13 - Virgin File

BOSCH EDC15C3 - Virgin

BOSCH EDC15M - IMMO OFF

BOSCH EDC15M - Virgin

BOSCH EDC16C9 - Virgin

BOSCH M1.5.X - IMMO OFF

BOSCH M2.8 - IMMO OFF

BOSCH ME 7.9.6 - Virgin

BOSCH MSA 11 EDC1.3.1 - Virgin & IMMO OFF

BOSCH MSA 15.X - Virgin

GM MULTEC (PLUG BLUE & GREY) MCU - Virgin & IMMO OFF

GM MULTEC (PLUG BLUE & GREY) EEPROM 27C256 - IMMO OFF

GM MULTEC (PLUG BLUE) MCU - Virgin & IMMO OFF

GM MULTEC (PLUG BLUE) SWAP EPROM - Virgin & IMMO OFF

GM MULTEC (PLUG RED & WHITE) MCU - Virgin & IMMO OFF

GM MULTEC (PLUG RED & WHITE) SWAP EPROM - Virgin & IMMO OFF

GM MULTEC (PLUG RED & BROWN) MCU - Virgin & IMMO OFF

GM MULTEC (PLUG RED & BROWN) SWAP EPROM - Virgin & IMMO OFF

GM MULTEC (PLUG PURPLE) MCU - Virgin & IMMO OFF

MAGNETI MARELLI MJD 6F3 - Version Flash - IMMO OFF

MAGNETI MARELLI MJD 6F3 - Versione Eprom - IMMO OFF

MAGNETI MARELLI MJD 6F3 - Virgin

MAGNETI MARELLI MJD 6J3 - Version Flash - IMMO OFF

MAGNETI MARELLI MJD 6J3 - Versione Eprom - IMMO OFF

MAGNETI MARELLI MJD 6J3 - Virgin
MAGNETI MARELLI MJD 6JF - Virgin
MAGNETI MARELLI MJD 6JO - Virgin
SIMTEC 56.1 - IMMO OFF
SIMTEC 56.1 - Virgin
SIMTEC 56.5 - IMMO OFF

PEUGEOT

BOSCH EDC15 - PIN PROGRAMMER
BOSCH EDC15C2 (1 PLUG) - IMMO OFF
BOSCH EDC15C2 (3 PLUG) - Version 1 - IMMO OFF
BOSCH EDC15C2 (3 PLUG) - Version 2 - IMMO OFF
BOSCH EDC15C6 - Virgin
BOSCH EDC15C6 FLASH - IMMO OFF
BOSCH EDC15C7 - IMMO OFF
BOSCH EDC15C7 - Virgin
BOSCH EDC16C0 - Virgin
BOSCH EDC16C3 - Virgin
BOSCH EDC16C34 - IMMO OFF
BOSCH EDC16C34 - PIN PROGRAMMER
BOSCH EDC16C34 - **Virgin File**
BOSCH EDC16CP39 - **Virgin File**
BOSCH MA 3.0 - Virgin & IMMO OFF
BOSCH MA 3.1 - Version 1 - Virgin & IMMO OFF
BOSCH MA 3.1 - Version 2 - IMMO OFF
BOSCH ME 7.4.4 - PIN PROGRAMMER
BOSCH ME 7.4.4 EEPROM - Version 1 - IMMO OFF
BOSCH ME 7.4.4 EEPROM - Version 2 - IMMO OFF
BOSCH ME 7.4.4 FLASH - IMMO OFF
BOSCH MOTRONIC MP 3.1 - Virgin & IMMO OFF
BOSCH MOTRONIC MP 3.2 - Virgin & IMMO OFF
BOSCH MOTRONIC MP 5.1 - Virgin & IMMO OFF
BOSCH MOTRONIC MP 5.1.1 - Virgin & IMMO OFF

BOSCH MOTRONIC MP 5.2 - Virgin & IMMO OFF
BOSCH MOTRONIC MP 7.0 - Virgin
BOSCH MOTRONIC MP 7.2 - Virgin & IMMO OFF
BOSCH MOTRONIC MP 7.3 - Virgin & IMMO OFF
BOSCH MSA 11 EDC1.3.8 - Virgin & IMMO OFF
BSI - 206 Year 2002 - PIN PROGRAMMER
BSI - 206 Year 2003 - PIN PROGRAMMER
BSI - 307 Year 2002 - PIN PROGRAMMER
BSI - 307 Year 2003 - PIN PROGRAMMER
BSI - 406 Year 2000 - PIN PROGRAMMER
BSI - 406 Year 2003 - PIN PROGRAMMER
BSI - Boxter Year 1998 - PIN PROGRAMMER
BSI - Partner Year 1998 - PIN PROGRAMMER
BSI Peugeot 206 - Siemens - Virgin Version 1
BSI Peugeot 206 - Siemens - Virgin Version 2
BSI Peugeot 206 HDI - Siemens - Virgin Version 3
BSI Peugeot 307 - Virgin 95160
BSI Peugeot 307 - Virgin 95160
BSI Peugeot 307 - Virgin HC912
BSI Peugeot Partner - Siemens Virgin
IMMOBOX - 406 - PIN PROGRAMMER
IMMOBOX Valeo - Peugeot 107 1000cc - Virgin File
JOHNSON VALEO - IMMO OFF
JOHNSON VALEO - Virgin
KEYPAD PSA - IMMO OFF
LUCAS EPIC MCU - Virgin & IMMO OFF
MAGNETI MARELLI 1AF.13-14-15-16-17 - IMMO OFF
MAGNETI MARELLI 48P - IMMO OFF
MAGNETI MARELLI 48P.10 - Virgin
MAGNETI MARELLI 48P.3X - Virgin & IMMO OFF
MAGNETI MARELLI 48P2.70 - IMMO OFF
MAGNETI MARELLI 48P2.XX - ALL Version - Virgin
MAGNETI MARELLI 4MP.XX - ALL Version - Virgin

MAGNETI MARELLI 4MP2.XX - ALL Version - Virgin
MAGNETI MARELLI 5NP - Virgin
MAGNETI MARELLI G6 MCU - Virgin & IMMO OFF
MAGNETI MARELLI G6 SWAP EPROM - Virgin & IMMO OFF
MAGNETI MARELLI IAW 1AP. XX - ALL VERSION - SWAP EPROM - Virgin & IMMO OFF
MAGNETI MARELLI IAW 1AP.20 - Virgin & IMMO OFF
MAGNETI MARELLI IAW 1AP.40 - Virgin & IMMO OFF
MAGNETI MARELLI IAW 1AP.41 - Virgin & IMMO OFF
MAGNETI MARELLI IAW 1AP.43 - Virgin & IMMO OFF
MAGNETI MARELLI IAW 1AP.80 - Virgin & IMMO OFF
MAGNETI MARELLI IAW 1AP.81 - Virgin & IMMO OFF
MAGNETI MARELLI IAW 1AP.83 - Virgin & IMMO OFF
MAGNETI MARELLI IAW 1AP.90 - Virgin & IMMO OFF
MAGNETI MARELLI IAW 6LPX.XX - ALL Version Auto Check - Virgin
MAGNETI MARELLI IAW 8P.XX MCU - Virgin & IMMO OFF
MAGNETI MARELLI IAW 8P.XX SWAP EPROM - Virgin & IMMO OFF
SAGEM S2000 - Virgin
SAGEM S2000 ECU - PIN PROGRAMM
SAGEM S2000RPM - Virgin
SAGEM SL96 TMS374 1x28F512 - Virgin & IMMO OFF
SAGEM SL96 TMS374 2x28F512 - Virgin & IMMO OFF
SIEMENS SID 801 - Version 1 - Virgin & IMMO OFF
SIEMENS SID 801 - Version 2 - Virgin
SIEMENS SID 801A - Version 1 - Virgin & IMMO OFF
SIEMENS SID 801A - Version 2 - Virgin
SIEMENS SID 802 - Virgin
SIEMENS SID 803 - PIN PROGRAMM
SIEMENS SID 804 - Virgin
SIEMENS SID 806 - Virgin
VISTEON DCU 102 - Virgin

BOSCH ME 7.1 - IMMO OFF

BOSCH ME 7.1.1 - IMMO OFF

BOSCH ME 7.8 - IMMO OFF

RENAULT

BOSCH EDC15 (1 PLUG) - Virgin

BOSCH EDC15 (2 PLUG) - Virgin

BOSCH EDC15C13 - Virgin File

BOSCH EDC15C3 (3 PLUG) - Virgin

BOSCH EDC16C3 - Virgin - Version 1

BOSCH EDC16C3 - Virgin - Version 2

BOSCH EDC16C34 - IMMO OFF

BOSCH EDC16C34 - Virgin File

BOSCH EDC16C36 - Virgin File

BOSCH EDC16C6 - Virgin

BOSCH MOTRONIC MP 7.0 - Virgin

BOSCH MSA 15.5 (Without Pressure Sensor) - IMMO OFF

BOSCH MSA 15.5 - MOD - IMMO OFF

BOSCH MSA 15.5 - Virgin

DELPHI DCM 1.2 - IMMO OFF

DELPHI DCM 1.2 - Virgin

DELPHI TRW - Virgin

DELPHI TRW DDCR - Virgin

LUCAS DCU3R - IMMO OFF

LUCAS DCU3R - Virgin

MAGNETI MARELLI 5NP.01 Hybrid - IMMO OFF

MAGNETI MARELLI 5NR.CE1 Hybrid

MAGNETI MARELLI 5NR.T1 Hybrid - IMMO OFF

MAGNETI MARELLI 5NR2-C2 - IMMO OFF

MAGNETI MARELLI 5NR2-C5 - IMMO OFF

MAGNETI MARELLI 5NR2-C5 - Virgin

MAGNETI MARELLI 5NR2-K5 - Virgin

MAGNETI MARELLI IAW 6R.20 - Virgin & IMMO OFF

MAGNETI MARELLI IAW 6R.30 - Virgin & IMMO OFF

MAGNETI MARELLI IAW 8R.30 - Virgin & IMMO OFF

SAGEM S2000RPM - IMMO OFF

SAGEM S2000RPM - Virgin

SAGEM S3000 - **Virgin File**

SAGEM SAFIR 1 SWAP EPROM - Virgin & IMMO OFF

SAGEM SAFIR 2 SWAP EPROM - Virgin & IMMO OFF

SIEMENS EMS 3132 - Virgin

SIEMENS EMS 3132 - Without CAN - IMMO OFF

SIEMENS EMS 3134 - Virgin

SIEMENS FENIX 1 MCU - Virgin & IMMO OFF

SIEMENS FENIX 3 MCU - Virgin & IMMO OFF

SIEMENS FENIX 5 - Virgin & IMMO OFF

SIEMENS HOM SWAP EPROM - IMMO OFF

SIEMENS SIM32 - IMMO OFF

SIEMENS SIM32 - Virgin

SIEMENS SIRIUS 32 - **MOD** - IMMO OFF

SIEMENS SIRIUS 32 - Virgin

SIEMENS SIRIUS 32 - Without CAN - IMMO OFF

SIEMENS SIRIUS 34 (FLASH 29F200) - Virgin

SIEMENS SIRIUS 34 (FLASH 29F400) - IMMO OFF

SIEMENS SIRIUS 34 (FLASH 29F400) - Virgin - Ver.1

SIEMENS SIRIUS 34 (FLASH 29F400) - Virgin - Ver.2

SIEMENS SIRIUS 35 - Virgin

RENAULT TRUCKS

BOSCH MS 6.2 - Virgin & IMMO OFF

BOSCH MS 6.3 - Virgin & IMMO OFF

ROVER

BOSCH EDC15C4 - Virgin

BOSCH MSA 11 EDC1.3.1 - Virgin & IMMO OFF

ECP OKI (PLUG BLU) - **MOD** - IMMO OFF

MEMS 1.9 MKC - IMMO OFF

MEMS 3 - IMMO OFF

MEMS MKC - IMMO OFF

ROVER MSB - IMMO OFF

SAAB

BOSCH EDC15M - Virgin

VISTEON DCU 102 - Virgin

SCANIA

BOSCH MS 6.2 - Virgin & IMMO OFF

SEAT

BOSCH EDC15 (1 PLUG) With EPROM 24C02 - IMMO OFF

BOSCH EDC15 (2 PLUG) With EPROM 24C02 - IMMO OFF

BOSCH EDC15M-5.X - EEPROM 24C04 - IMMO OFF

BOSCH EDC15M-5.X - FLASH 29F400 - IMMO OFF

BOSCH EDC15P - EEPROM 24C04 - IMMO OFF

BOSCH EDC15P - FLASH 29F400 - IMMO OFF

BOSCH EDC15V - EEPROM 24C04 - IMMO OFF

BOSCH EDC15V - FLASH 29F400 - IMMO OFF

BOSCH EDC15V P40 EURO3 - FLASH 29F400 - IMMO OFF

BOSCH EDC15VM+ - EEPROM 24C04 - IMMO OFF

BOSCH EDC15VM+ - FLASH 29F400 - IMMO OFF

BOSCH EDC16CP34 - IMMO OFF

BOSCH EDC16U1 - IMMO OFF

BOSCH EDC16U31 - IMMO OFF

BOSCH EDC16U34 - IMMO OFF

BOSCH M3.2.1 - IMMO OFF

BOSCH M3.8.X - Version 1 - IMMO OFF

BOSCH M3.8.X - Version 2 - IMMO OFF

BOSCH M5.4.1 - IMMO OFF

BOSCH M5.9.2 - IMMO OFF

BOSCH ME 7.X.X - **ALL Version Auto Check** - IMMO OFF
BOSCH MED 9.5.10 - IMMO OFF
BOSCH MP 9.0 - IMMO OFF
BOSCH MSA 11 EDC1.3.1 - Virgin & IMMO OFF
BOSCH MSA 15.X - IMMO OFF
DIGIFANT 3.2 - IMMO OFF
MAGNETI MARELLI 16S.XX MCU - Virgin & IMMO OFF
SIEMENS 5WP4 SIMOS 1.X (1 PLUG) - IMMO OFF
SIEMENS 5WP4 SIMOS 2.X (2 PLUG) EPROM 27C010 - IMMO OFF
SIEMENS 5WP4 SIMOS 2.X (2 PLUG) FLASH 29F200 - IMMO OFF
SIEMENS 5WP4 SIMOS 3.X (2 PLUG) - **ALL Version Auto Check** - IMMO OFF
SIEMENS SIMOS 7.X - **ALL Version Auto Check** - IMMO OFF
SIEMENS SIMOS 8.1 - IMMO OFF
SIEMENS SIMOS 9.1 - IMMO OFF

SKODA

BOSCH EDC15 (1 PLUG) With EPROM 24C02 - IMMO OFF
BOSCH EDC15 (2 PLUG) With EPROM 24C02 - IMMO OFF
BOSCH EDC15M-5.X - EEPROM 24C04 - IMMO OFF
BOSCH EDC15M-5.X - FLASH 29F400 - IMMO OFF
BOSCH EDC15P - EEPROM 24C04 - IMMO OFF
BOSCH EDC15P - FLASH 29F400 - IMMO OFF
BOSCH EDC15V - EEPROM 24C04 - IMMO OFF
BOSCH EDC15V - FLASH 29F400 - IMMO OFF
BOSCH EDC15V P40 EURO3 - FLASH 29F400 - IMMO OFF
BOSCH EDC15VM+ - EEPROM 24C04 - IMMO OFF
BOSCH EDC15VM+ - FLASH 29F400 - IMMO OFF
BOSCH EDC16CP34 - IMMO OFF
BOSCH EDC16U1 - IMMO OFF
BOSCH EDC16U31 - IMMO OFF
BOSCH EDC16U34 - IMMO OFF
BOSCH M3.2.1 - IMMO OFF
BOSCH M3.8.X - Version 1 - IMMO OFF

BOSCH M3.8.X - Version 2 - IMMO OFF

BOSCH M5.4.1 - IMMO OFF

BOSCH M5.9.2 - IMMO OFF

BOSCH MA 1.2.3 - IMMO OFF

BOSCH ME 7.X.X - ALL Version Auto Check - IMMO OFF

BOSCH MED 9.5.10 - IMMO OFF

BOSCH MSA 15.X - IMMO OFF

BOSCH MSA11 EDC1.3.1 - Virgin & IMMO OFF

DIGIFANT 3.2 - IMMO OFF

SIEMENS 5WP4 SIMOS 1.X (1 PLUG) - IMMO OFF

SIEMENS 5WP4 SIMOS 2.X (2 PLUG) EPROM 27C010 - IMMO OFF

SIEMENS 5WP4 SIMOS 2.X (2 PLUG) FLASH 29F200 - IMMO OFF

SIEMENS 5WP4 SIMOS 3.X (2 PLUG) - ALL Version Auto Check - IMMO OFF

SIEMENS SIMOS 7.X - ALL Version Auto Check - IMMO OFF

SIEMENS SIMOS 8.1 - IMMO OFF

SIEMENS SIMOS 9.1 - IMMO OFF

SMART

BOSCH EDC15CG - Virgin

BOSCH MEG 1.0 - Virgin

SSANGYONG

DELPHI - IMMO OFF

SUZUKI

BOSCH EDC15C2 (1 PLUG) - IMMO OFF

BOSCH EDC15C2 (3 PLUG) - Version 1 - IMMO OFF

BOSCH EDC15C2 (3 PLUG) - Version 2 - IMMO OFF

BOSCH EDC16C3 - Virgin

DELPHI DCM 1.2 - IMMO OFF

DELPHI DCM 1.2 - Virgin

DELPHI TRW - Virgin

DELPHI TRW DDCR - Virgin

DENSO Old Version - IMMO OFF

HITACHI With OKI 93LC56 - IMMO OFF

LUCAS DCU3R - Virgin

MAGNETI MARELLI MJD 6F3 - Version Eprom - IMMO OFF

MAGNETI MARELLI MJD 6F3 - Version Flash - IMMO OFF

MAGNETI MARELLI MJD 6F3 - Virgin

MAGNETI MARELLI MJD 6J3 - Version Eprom - IMMO OFF

MAGNETI MARELLI MJD 6J3 - Version Flash - IMMO OFF

MAGNETI MARELLI MJD 6J3 - Virgin

MAGNETI MARELLI MJD 6JF - Virgin

SIEMENS SID 801 - Version 1 - Virgin & IMMO OFF

SIEMENS SID 801 - Version 2 - Virgin

SIEMENS SID 801A - Version 1 - Virgin & IMMO OFF

SIEMENS SID 801A - Version 2 - Virgin

SIEMENS SID 803 - PIN PROGRAM

TOYOTA

BOSCH 5 PLUG - YARIS - **Virgin File**

BOSCH EDC16C - Virgin

DENSO - Virgin

DENSO D4D - IMMO OFF

IMMOBOX Valeo - Toyota AYGO 1000cc - Virgin File

UTILITY

AUDI - BOSCH EDC16U1 - Remove EGR Controls

FIAT - MAGNETI MARELLI MJD 6F3 & 6J3 - Remove EGR Controls

FIAT - Reset Service - BSI Siemens 95160

FIAT - Reset Service - BSI Valeo 95128

LANCIA - MAGNETI MARELLI MJD 6F3 & 6J3 - Remove EGR Controls

LANCIA - Reset Service - BSI Valeo 95128

OPEL - MAGNETI MARELLI MJD 6F3 & 6J3 - Remove EGR Controls

PSA - Reset Service - BSI Johnson Controls 95128

PSA - Reset Service - BSI Siemens 95160

PSA - Reset Service - BSI Siemens 95256

PSA - Reset Service - BSI Siemens Version 1 95128

PSA - Reset Service - BSI Siemens Version 2 95128

PSA - Reset Service - BSI Valeo 24C128

PSA - Reset Service - BSI Valeo 95128

PSA - Reset Service - BSI Valeo 95160

PSA - Reset Service - BSI Valeo MCU HC912

SEAT - BOSCH EDC16U1 - Remove EGR Controls

SKODA - BOSCH EDC16U1 - Remove EGR Controls

SUZUKI - MAGNETI MARELLI MJD 6F3 & 6J3 - Remove EGR Controls

VOLLSKWAGEN - BOSCH EDC16U1 - Remove EGR Controls

VAUXHALL

BOSCH EDC MSA 15.6 - Virgin

BOSCH EDC15C3 - Virgin

BOSCH EDC15M - Virgin

BOSCH M1.5.X - IMMO OFF

BOSCH M2.8 - IMMO OFF

BOSCH ME 7.9.6 - Virgin

BOSCH MSA11 EDC1.3.1 - Virgin & IMMO OFF

GM MULTEC (PLUG BLUE & GREY) EPROM - Virgin & IMMO OFF

GM MULTEC (PLUG BLUE & GREY) MCU - Virgin & IMMO OFF

GM MULTEC (PLUG LIGHT BLUE) SWAP EPROM - Virgin & IMMO OFF

GM MULTEC (PLUG LIGHT BLUE) MCU - Virgin & IMMO OFF

GM MULTEC (PLUG RED & WHITE) MCU - Virgin & IMMO OFF

GM MULTEC (PLUG RED & WHITE) SWAP EPROM - Virgin & IMMO OFF

GM MULTEC (PLUG RED & BROWN) MCU - Virgin & IMMO OFF

GM MULTEC (PLUG RED & BROWN) SWAP EPROM - Virgin & IMMO OFF

MAGNETI MARELLI MJD 6F3 - Version Eprom - IMMO OFF

MAGNETI MARELLI MJD 6F3 - Version Flash - IMMO OFF

MAGNETI MARELLI MJD 6F3 - Virgin

MAGNETI MARELLI MJD 6J3 - Version Eprom - IMMO OFF

MAGNETI MARELLI MJD 6J3 - Version Flash - IMMO OFF

MAGNETI MARELLI MJD 6J3 - Virgin

SIMTEC 56.1 - Virgin

SIMTEC 56.5 - IMMO OFF

SIMTEC 56.5b - IMMO OFF

VOLKSWAGEN

BOSCH EDC15 (1 PLUG) With EPROM 24C02 - IMMO OFF

BOSCH EDC15 (2 PLUG) With EPROM 24C02 - IMMO OFF

BOSCH EDC15C4 - IMMO OFF

BOSCH EDC15M-5.X - EEPROM 24C04 - IMMO OFF

BOSCH EDC15M-5.X - FLASH 29F400 - IMMO OFF

BOSCH EDC15P - EEPROM 24C04 - IMMO OFF

BOSCH EDC15P - FLASH 29F400 - IMMO OFF

BOSCH EDC15V - EEPROM 24C04 - IMMO OFF

BOSCH EDC15V - FLASH 29F400 - IMMO OFF

BOSCH EDC15V P40 EURO3 - FLASH 29F400 - IMMO OFF

BOSCH EDC15VM+ - EEPROM 24C04 - IMMO OFF

BOSCH EDC15VM+ - FLASH 29F400 - IMMO OFF

BOSCH EDC16CP34 - IMMO OFF

BOSCH EDC16U1 - IMMO OFF

BOSCH EDC16U31 - IMMO OFF

BOSCH EDC16U34 - IMMO OFF

BOSCH M2.3.2 - IMMO OFF

BOSCH M3.2.1 - IMMO OFF

BOSCH M3.8.X - Version 1 - IMMO OFF

BOSCH M3.8.X - Version 2 - IMMO OFF

BOSCH M5.4.1 - IMMO OFF

BOSCH M5.9.2 - IMMO OFF

BOSCH MA 1.2.3 - IMMO OFF

BOSCH MA 1.3 - IMMO OFF

BOSCH ME 7.X.X - ALL Version Auto Check - IMMO OFF

BOSCH MED 9.5.10 - IMMO OFF

BOSCH MP 9.0 - IMMO OFF

BOSCH MSA 11 EDC 1.3.1 - Virgin & IMMO OFF

BOSCH MSA 12 EDC 1.3.3 - IMMO OFF

BOSCH MSA 15.X - IMMO OFF

DIGIFANT 3.2 - IMMO OFF

MAGNETI MARELLI 1AV - IMMO OFF

MAGNETI MARELLI 4MV.XX - **Virgin File**

SIEMENS 5WP4 SIMOS 1.X (1 PLUG) - IMMO OFF

SIEMENS 5WP4 SIMOS 2.X (2 PLUG) EPROM 27C010 - IMMO OFF

SIEMENS 5WP4 SIMOS 2.X (2 PLUG) FLASH 29F200 - IMMO OFF

SIEMENS 5WP4 SIMOS 3.X (2 PLUG) - **ALL Version Auto Check - IMMO OFF**

SIEMENS SIMOS 7.X - **ALL Version Auto Check - IMMO OFF**

SIEMENS SIMOS 8.1 - IMMO OFF

SIEMENS SIMOS 9.1 - IMMO OFF

VOLVO

BOSCH EDC15 (1 PLUG) - Virgin

BOSCH EDC15C3 - Virgin

BOSCH EDC16C31 - Virgin

GM DELCO

SIEMENS SIRIUS 32 - Virgin

SIEMENS SIRIUS 32 - Without CAN - IMMO OFF

VOLVO TRUCKS

BOSCH EDC7 - IMMO OFF

BOSCH EDC7 - Virgin

DISCLAIMER: this software is supplied only such as test and for not moving cars. We will not be responsible for any direct and indirect damages from the use of the file created by the software.